

Undergraduate Catalog 2016-2017



Kasteelstraat 48
1600 Sint-Pieters-Leeuw, Belgium
In Belgium: 02 / 334.85.55
Outside of Belgium: +32.2.334.85.55
Fax: 02 / 334.85.59
E-Mail: info@ctsem.edu
Web Site: www.ctsem.edu



A Message From President Joseph Dimitrov

Life is a journey of opportunities. We hear similar phrases at graduation ceremonies, presidential inaugurations, anniversary celebrations, awards-winning assemblies and other similar solemn events. However, this truth is more than occasional reminder. It is daily reality.

There are various kinds of opportunities, but most of them could be divided into two broad categories: negative and positive ones. Following the depraved human nature, some people would easily seize “the chance” to avoid justice, laws, integrity, equality and other virtues in order “to gain” something for themselves. They turn their life into a journey of evil opportunities.

Another group of people would focus on taking hold of the good scenarios that life often has to offer – education, profession, respect by others, welfare through honest and hard work and other types of similar good standing in the society. They turn their life into a journey of positive opportunities.

However, there is one more category of people whose life is not only characterized by following good opportunities but also by recognizing the Giver of these opportunities and Continental Theological Seminary is a place where such people could be met. Uniting students from different continents, cultures and mindsets, the school offers the unique opportunity for establishing life-long friendships, quality education skills, growth in various Christian ministries and awareness of the individual’s place and importance in meeting the spiritual needs of this world. Such people turn their life into a journey of godly opportunities.

This has been our story for almost fifty years and I warmly welcome you through the pages of this catalog. May you discover the opportunities that are available for you at Continental, and most of all may you consider your life taking in consideration how rewarding it is to study, research and worship the One who might direct your paths through these opportunities just like He has done and does it with many others like you.

Welcome,

A handwritten signature in black ink, appearing to read "Joseph Dimitrov". The signature is stylized with a large, circular flourish at the end.

Prof. Dr. Joseph Dimitrov
President



c o n t e n t s

who we are	
About Continental	2
admissions	
How it Happens	5
finances	
Costs and Fees	9
student life	
Living in Community	13
academics	
Policies and Programs	15
application	
Application Materials	33

“The spiritual life is first of all a life. It is not merely something to be known and studied; it is to be lived.”

Thomas Merton

Disclaimer

This catalog is published for information purposes only. Continental Theological Seminary, if deemed necessary, reserves the right to make any changes in its content, courses, regulations, policies and other provisions at any time without notice.

About Continental Theological Seminary

Continental Theological Seminary, a Pentecostal Center for higher education, exists to provide theological studies in an international environment to prepare men and women for Christian ministry and challenge them to develop spiritually, intellectually, emotionally, and culturally in order to serve God and their fellow man.

—Mission Statement
Continental Theological Seminary

Our History

The roots of Continental Theological Seminary are traced back to 1959 and to the establishment of Emmanuel Bible Institute in Andrimont, Belgium. Victor G. Greisen, Field Secretary for Europe, the Middle East, and Southern Asia of the Division of Foreign Missions of the Assemblies of God (USA) was the leading force in its founding. The Chateau des Croisiers in Andrimont was purchased to serve as the first college facility. In 1962 Pastor Alfred Amié of Belgium became the director, a position he held until the end of the 1968 school year.

In 1969, under the leadership of Greisen's successor Charles E. Greenaway, a decision was made to establish a regional theological school in Brussels that would serve EurAsia and the Middle East. The English-language program was added and a new school emerged, taking the name of Continental Bible College. Facilities were purchased in the commune of Sint-Genesius-Rode and the school began operations. In 1970 the original two-year course of study was expanded to a four-year degree program and, after some time, it became apparent that the existing facilities were inadequate to meet the needs of the growing college.

In 1977 the college purchased a historic chateau beautifully situated in Sint-Pieters-Leeuw, near Brussels. After many months of extensive renovation, classes started on the new campus in the fall of 1978. In 1985 a new chapel and classroom building was completed. In 1990 a new dormitory/apartment complex was constructed to better serve the housing needs of an expanding student body.

Finally in 1991, in order to accommodate the addition of a Graduate Studies Program, Continental Bible College was renamed Continental Theological Seminary.

The buildings of the seminary are situated in a park-like setting beside a small lake surrounded by trees, making it an ideal place for study, prayer, and meditation. A master plan has been prepared for future development that will include the construction of living areas for students, a new dining hall, and a library building to house the expanding collection of books numbering more than 45,000.

Alumni are scattered throughout the world ministering in more than 60 countries as pastors, missionaries, professors in Bible institutes, seminaries and public schools,

evangelists, social workers, presidents / directors of national Bible institutions, institutional chaplains, Bible translators, workers in children's ministries, ministers of church music, ministers of Christian education and workers in Christian radio and television production, etc. To God be the glory...great things He has done!

Our Location

Continental is attractively situated in Sint-Pieters-Leeuw on the grounds of the former Rattendaal castle. The history of the property can be traced back as far as 1174. Throughout the years, ownership of the property passed through many hands. During World War II German forces occupied the facilities, and after the liberation of Belgium, it became a school for Jewish young men. Finally in 1977, after remaining unoccupied for a long period of time, the General Council of the Assemblies of God (USA) purchased the property and completely renovated the facilities. In recent years additional buildings have been added; a chapel, classrooms and living facilities now enhance the functionality of the campus and the beauty of the property.

Statement of Faith

1. We believe the Bible to be inspired, the only infallible authoritative Word of God.
2. We believe that there is one God, eternally existent in three persons: Father, Son and Holy Spirit.
3. We believe in the deity of our Lord Jesus Christ, in His virgin birth, in His sinless life, in His miracles, in His vicarious and atoning death through His shed blood, in His bodily resurrection, in His ascension to the right hand of the Father, and in His personal return in power and glory.
4. We believe that for the salvation of lost and sinful man regeneration by the Holy Spirit through faith in Jesus Christ is absolutely essential.

5. We believe in the baptism in the Holy Spirit with the evidence of speaking in other tongues as the Spirit gives the utterance according to Acts 2:4, and in the operation of the spiritual gifts and ministries.
6. We believe in the ministry of the Holy Spirit by whose indwelling the Christian is enabled to live a godly life.
7. We believe in the resurrection of both the saved and the lost; they that are saved to eternal life and they that are lost to the resurrection of damnation.
8. We believe in the church of Jesus Christ and in the unity of believers.
9. We believe in the practical application of the Christian faith in everyday experience and the need to minister to people in every area of life, which includes not only the spiritual but also the social, political and physical.

Community Life Statement

We affirm that the Scriptures of the Old and New Testaments are the ultimate guide for our values, attitudes, and behaviors in all relationships.

We seek to foster the development of spiritual maturity through maintaining a personal devotional life and through participating in community worship and prayer.

We seek to keep the unity of the Spirit through the bond of peace and in gentleness, patience, and humility, accept one another in love.

We seek to encourage one another to mature in Christlikeness through attempting to speak the truth in love in the classrooms, in business affairs, in social relationships, and in all other areas of our common life.

We seek to encourage unity in families through responsible relationships.

We seek to respect and encourage our uniqueness in Christ, which includes our diversity of denomination, race, culture, personality, experience, gifts, and goals.

We seek to become involved individually and corporately with the Church in ministering to spiritual and social needs within and beyond our own community.

We renounce attitudes such as greed, jealousy, false pride, lust, bitterness, hostility, an unforgiving spirit, and prejudice such as that based on race, sex, and academic or socioeconomic status.

We renounce behaviors such as distortion of God's Word, deception, falsehood, drunkenness, stealing, and sexual immorality such as premarital intercourse, adultery, and homosexual behavior.

We believe where conflict or sin occurs in the community at Continental Theological Seminary, a biblical process such as stated in Matthew 18:15-20 should be followed to seek correction, forgiveness, restitution, and reconciliation.

We seek to practice an attitude of mutual submission according to the mind of Christ, recognizing that at times our personal rights and preferences must be put aside for the sake of others' conscience and the good of the community.

We seek to encourage the cultivation of such spiritual attitudes as love, joy, peace, patience, kindness, goodness, faithfulness, gentleness, and self-control.

Accreditation of the Degree Programs

The academic degrees and diplomas, which Continental Theological Seminary grants, conform to the Belgian legislation on higher education. In consideration of the accepted by the Flemish Parliament "Decree on restructuring higher education in Flanders" of 4th April 2003 as amended by the decree of 19th March 2004, the Belgian Flemish government officially extended registration of Continental Theological Seminary as an institution for higher education to grant degrees in theology.

International Endorsements

Because of the quality educational experience Continental provides for its students, other leading international universities readily accept CTS graduates into their advanced degree programs.

Our Traditions

Chapel

As a Pentecostal community, the purpose of chapel at Continental Theological Seminary is to cultivate our relationship with God and each other. Chapel experiences are vital and an integral part of the seminary culture at Continental. We are committed to developing the spiritual life of each student not only through the classroom but also in times of community celebration, worship, inspiration, edification, prayer, and proclamation of the Word.

Welcome Weekend

Welcome Weekend is the weekend prior to the beginning of classes when Continental receives and welcomes new students into the community of CTS. It is a time of orientation to the seminary and community life.

Community Concerts

Organized by the CTS Department of Music in December of each year, the seminary hosts a Christmas community concert. Invitations are distributed throughout the community inviting local authorities, neighbors, and local businesses to enjoy an evening of Christmas music on the campus. Likewise in the spring of each year, a spring community concert is planned, inviting friends and neighbors to the campus.

Open Doors

Twice a year through the unique program "Open Doors", those interested in attending CTS are invited to the campus to experience what it is like to attend seminary. During this time opportunity is given to attend classes, enjoy worshiping in our chapel services, and meet students, faculty, and staff. The visit includes transportation to and from the airport and / or the train station. Meals, lodging, and campus tours are also provided.

Student Ministry Week

Each spring the entire student body participates in a continent-wide evangelistic outreach. Through the leadership of the Student Ministry Committee, contacts are made with local churches and church organizations to plan outreach ministries in local communities and throughout Europe.

Graduation

Commencement is an annual ceremony that honors and recognizes the scholarship, service, and Christian growth of the graduating class. It is a celebratory service where students, faculty, staff, parents, relatives, and friends congratulate the graduates on their "new beginning." Diplomas and degrees are awarded to students who have successfully completed the requirements of their chosen program of study.

Summer Missions

Annually, from funds raised during missions emphasis throughout the academic year, students are sent to various countries assisting in a variety of short-term missionary endeavors. Through serving others, this opportunity gives students a "hands-on" experience in learning more about culture, language, and other aspects of missions work. The following academic year, each summer intern gives a report of his work during the seminary's annual missions convention.

Missions Convention

This annual event is held each fall semester and provides an opportunity for the entire seminary community to focus attention on the needs of the world. Classes are dismissed for two days, and chapel services are conducted in the mornings and in the evenings. Faith promises are collected which in turn helps to fund student summer missions internships.

Spiritual Emphasis

Held each spring semester, Spiritual Emphasis provides opportunity for the entire campus to focus on God and what He is saying in their lives. For two days classes are dismissed, and chapel services are held in the mornings and in the evenings.

Evangelism Weekend

Organized by the Student Ministry Committee and conducted in the fall semester, this weekend of ministry is dedicated to assist the churches of Belgium in evangelistic endeavors. This is an integral part of students' practical ministry experience while studying at the seminary.

Our Learning Resources

Library

The seminary houses one of the finest evangelical libraries in Europe. The V. G. Greisen Memorial Library serves as the center for academic endeavors outside the classroom. Currently more than 45,000 volumes in English, Dutch, French, and German are in its collections, including several historical collections. Additionally, the school subscribes to academic journals, magazines, and periodicals in various languages. Due to the seminary's agreement with the University of Wales, CTS students also have access to the online theological library of the University.

Student Computer Lab

In the student computer lab, a standard set of academic software tools are provided that include word processing, spreadsheets, and presentation software. The lab also provides full access to the Internet, electronic mail, World Wide Web, a laser printer, and other local networked resources.



a life changing experience

Changing Lives to Change the World

Continental Theological Seminary admits students with academic characteristics that predict success in the seminary program to which they seek enrollment and who exhibit personal qualities that indicate a contribution to and support of the mission of the school.

Admission to the seminary involves both a commitment to academic excellence and to a lifestyle consistent with the values and objectives of the seminary. By signing the application form, each student certifies an intent to abide by the ethical and moral principles of the seminary, as well as an acceptance of the challenges of learning and spiritual development.

In selecting students for admission, Continental Theological Seminary looks for evidence of Christian commitment, as well as the desire and capacity to learn. Admission is based on a composite picture afforded by the students' transcripts, test scores, character references, and an expression of Christian experience and educational objectives.

Admissions

Admissions

Admissions Procedure

Those desiring admission to Continental Theological Seminary should submit the following documents to the Admissions Office:

1. A completed Application Form, accompanied by payment of the 35 euro non-refundable application fee, and six recent head and shoulder photographs (passport style).
2. A Personal Statement:
 - Describing your personal and ministry goals;
 - Describing your present and past involvement in church and other ministry activities;
 - Commenting on encouragement you have received from family and friends and how they view your application to Continental;
 - Describing your strengths and weaknesses;
 - Describing your medical and psychological history.
3. A Personal Autobiography:
Submit a brief autobiography of not more than two pages. Be sure to comment on your commitment to Christ, including when and how you became a Christian, when you were baptized in water, when you were baptized in the Holy Spirit, if you feel a call of God on your life for ministry, the significant factors which have aided your growth as a Christian, and the important events and people shaping your identity as a person.
4. A completed Pastoral Recommendation Form from the pastor of your church.
5. A completed Academic Recommendation Form from a professor, school administrator, or a professional colleague.
6. An official secondary education (high school) transcript (a high school “equivalency” transcript is also acceptable).
7. If applicable, transcripts from all institutions of higher education. Transfer students must also submit a reference form from the Dean of Students of the college / seminary most recently attended.
8. A completed medical health history form. This medical history is required of students who are (1) entering CTS for the first time, (2) returning after an absence of one year, or (3) who have previously attended other CTS academic programs but are entering regular seminary classes for the first time. Proof of health insurance is required of all students.

9. A mastery of the English language is crucial for successful completion of the academic programs at Continental. Therefore, students whose first language is not English must submit acceptable test scores from one of several available English proficiency exams. The Admissions Office will instruct applicants which English exam they must successfully complete.

Applicants will receive a letter of their acceptance / denial to the seminary approximately two to four weeks after their admission file is completed.

Non-EU Students

In accordance with government regulations, applicants who are from a non-EU country must arrange for a financial sponsor who must guarantee full responsibility for the student's expenses. Students are not permitted to work and therefore must demonstrate that they have enough funding to meet full financial obligations for the academic year. Non-EU students must carry a full academic load each semester.

It is recommended that prospective non-EU students apply no later than six months prior to the term in which they wish to enroll in order to receive materials, process the application, and obtain a student visa.

In addition to satisfying the general requirements for admission, non-EU students whose first language is not English must also demonstrate English proficiency.

Visa Information

All students coming from outside the EU are required to obtain a *student visa* before arriving in Belgium. Applicants may use their letter of acceptance sent by the seminary to obtain a student visa from their local Belgian Consulate. In accordance with Belgian law, students arriving without a valid student visa will not be allowed to register for classes. All students must abide by any and all visa restrictions imposed by the Belgian authorities. Failure to do so may result in the loss of one's student status (visa).

Transfer Students

Transfer students are accepted from other colleges / seminaries / universities based on transcripts, satisfactory conduct records, and a clear financial record. All transcripts from colleges / seminaries / universities are required. Transfer students must also submit a reference form completed by the Dean of Students or equivalent at the last college / seminary / university most recently attended. Transfer students must take all applicable entrance examinations.

Transfer of Credit

Transfer of credit toward a degree program is based on the comparability and applicability of the credit from the sending institution toward a degree program at Continental. Grades of at least “C” or its equivalent are considered for possible transfer of credit. Transfer students must earn at least 120 credits at CTS to qualify for graduation.

Readmission

Any student who has attended Continental and has discontinued studies for one academic year or more must apply for readmission. A simplified re-entrance form is available from the Admissions Office. Former students must be granted acceptance before they are permitted to register.

Visit the Campus

Words and pictures provide impressions of Brussels, but to fully appreciate it you must see it in person.

The same holds true for Continental Theological Seminary. Located in a quiet residential neighborhood, CTS’s parklike campus is a picturesque setting blending modern buildings with those from the eighteenth century. Yet this classic setting is only a few minutes from the bustling center of Brussels, the capital of Europe.

Students agree that a visit to the campus is the best way to discover Continental. With this in mind, we try to make it easy. Simply call the Business Office at least two weeks in advance to schedule your campus visit or attend one of our regularly scheduled “Open Doors” events.

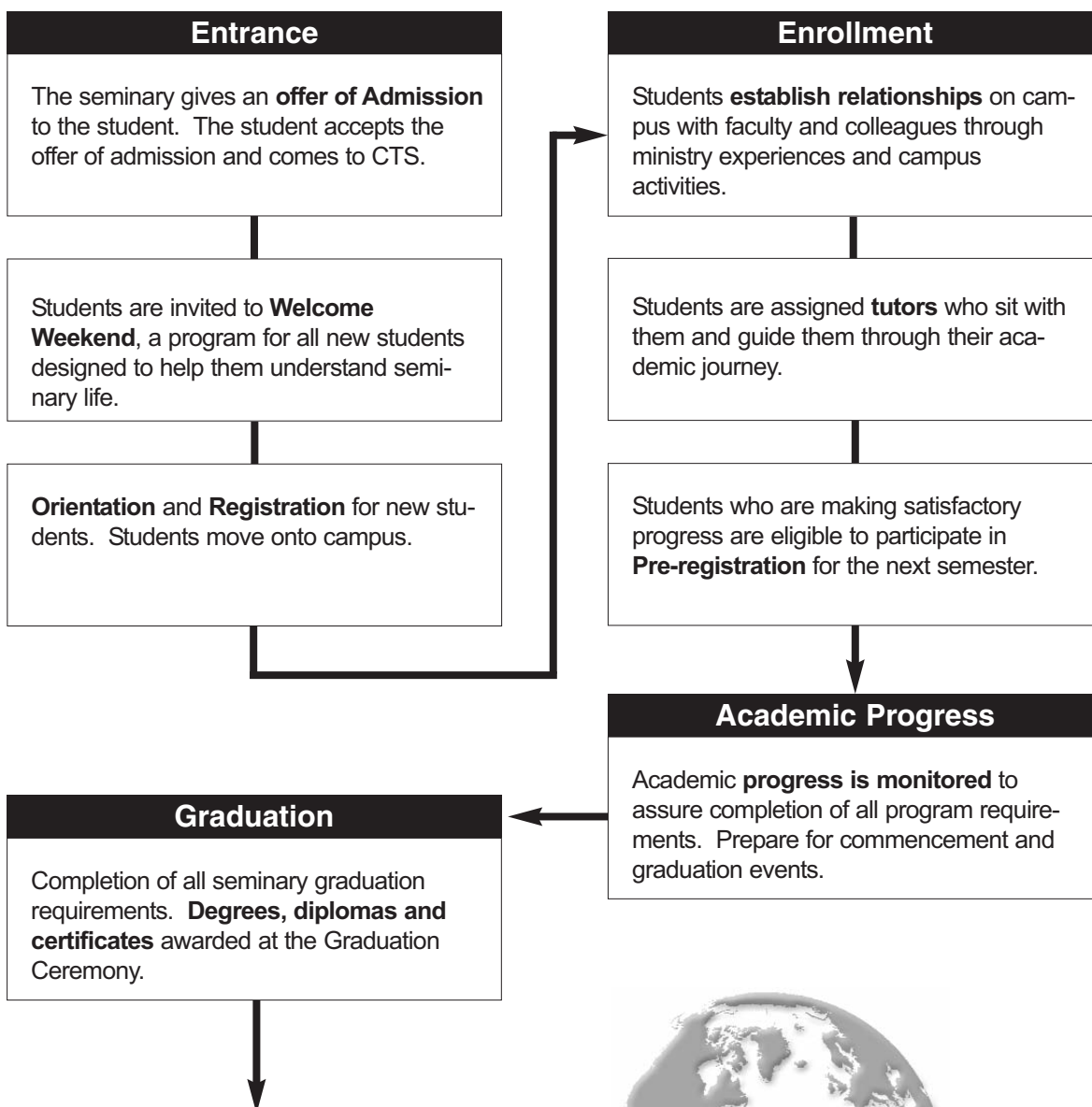
Orientation

Each year before classes begin, Continental conducts a comprehensive orientation to the academic and social community of the seminary. Orientation is designed to assist new and returning students to successfully prepare for the new school year. All registered students must attend Orientation.

What Happens Once a Student is Admitted?

Progression from Admission through Graduation

Once a student accepts Continental's offer of admission, an educational journey begins. Here is an overview of what to expect from admission to graduation.



8

Welcome to the ranks of CTS Alumni! *Going...into all the world.*





a worthy investment

Dividends that Last a Lifetime

Continental Theological Seminary does not receive taxes or public funds to support its operation. Each student is charged tuition and fees that support about 50% of the cost of education. The remaining costs for CTS students are underwritten by donations from friends of the seminary.

The goal at the seminary is to provide the finest education possible for the lowest possible cost. We take our stewardship seriously at Continental, inspecting every proposed expense, verifying that it is necessary. We ask the Lord daily to bless our efforts and to provide the funds necessary to keep us from a deficit operation. At the same time, we also urge each student to examine his own financial assets, to investigate the possibility of financial assistance from family, friends, church, denomination, and/or his own employment to assume his proportionate financial responsibility for education. Students are urged to be good stewards of finances in order to meet their educational needs.

Costs and Financial Information

Fees for the 2012-2013 Academic Year (All prices listed in Euro)

TUITION FEES (Students could pay based on monthly payment schedule or in full)

Bachelor in Bible and Applied Theology:

Residential (Full-Time)	per year
Tuition and Administration	3,045.00 €
Single 4 ECTS Module	260.00 €
Single 6 ECTS Module	520.00 €

Non-Residential (Full-Time)	per year
Tuition and Administration	3,045.00 €

ACCOMMODATION FEES

Annual fee for meals and accommodations:

Shared Room	3,260.00 €
-------------	------------

REGISTRATION FEES

Seminary Application Fee payable with application:

Full course	40.00 €
Single Modules	10.00 €

Regulations Governing the Payment of Fees

Students are accepted at CTS on the understanding that when registering for the course of study they agree to the following regulations governing payment of fees:

Annual Review

Whereas every effort is made to keep the cost of fees to a minimum, it is found necessary to review fees every year.

Payment in Advance

Payment for the year is due and payable in advance or on the day of registration. Full-time students may arrange to pay their fees in eight equal installments. Additional administrative charges will be incurred for checks that banks refuse for insufficient funds and for late payment of fees.

Record of Payment

All students are advised to keep their own record of payment of fees by the safekeeping of ALL their receipts received for Payment of Fees, as well as a record of how much they owe. Fee accounts may be discussed in the Business Office by making a prior appointment.

Housekeeping Duties

Board and Lodging fees are set at a level which assumes that students will undertake Housekeeping Duties as outlined in the Student Handbook. Persistent lack of co-operation, lateness, or absence from Housekeeping Duties, for whatever reason, will result in the imposition of additional Board and Lodging fees.

Student Insurance

Belgian law requires that all students carry valid health insurance for the academic year.

EC (European Community) Students

To be exempt from purchasing health insurance in Belgium, EC students must bring a Form E-111 or Form E-128 from their insurance provider. If desired, supplemental insurance may be purchased.

Non-EC (European Community) Students

Non-EC residential students are required to purchase Belgian health insurance at registration.

Expulsion / Suspension

No repayment of fees is made to students who are expelled or suspended.

Other Charges

APARTMENTS:

Chateau :	3,480.00 €
Annex C :	3,480.00 €
Annex / MAPS (3rd floor - Boys dorm):	4,470.00 €
Annex / MAPS (2nd floor - Boys dorm):	4,650.00 €
Audit (per 6 ECTS):	260.00 €
Audit (per 4 ECTS):	130.00 €
Health insurance (new students):	actual cost
Holiday / vacation lodging:	
Residential students - per night	20.00 €
Guests: apartment - per night	60.00 €
Guests: dorm / attic - per night (single room) ..	30.00 €
Guests: dorm / attic - per night (shared room) ..	25.00 €
ID card replacement :	5.00 €
Late Registration Fee (returning students)	50.00 €
Lost key :	replacement value
New Student Orientation :	40.00 €
Payment by bank transfer (non-Belgian): .	bank charges
Payment by check (non-Belgian):	bank charges
Room Deposit (refundable):	50.00 €
Single Room Occupancy (per semester):	200.00 €
Telephone (per room / per year):	40.00 €
Transcript (each):	5.00 €
Withdrawal Fee :	100.00 €

International Payments

You may be able to arrange with your bank to pay by bank transfer or bank deposit. Our Bank information is:

KBC Bank

Koning Albertplein 1

1600 Sint-Pieters-Leeuw, Belgium

Pay to the account of: Continental Theological Seminary

Account No. 426-8125211-81 (Please include your name)

BIC: KREDBEBB

IBAN: BE36-4268 1252 1181

Argenta Bank

Rink 48

1600 Sint-Pieters-Leeuw, Belgium

Pay to the account of: Continental Theological Seminary

Account No. 979-0826207-63 (Please include your name)

BIC: ARSPEBE22

IBAN: BE 40-9790 8262 0763

Always pay in EURO

CTS RESERVES THE RIGHT TO CHANGE THE SCHEDULE
OF FEES WITHOUT PRIOR NOTICE

Campus life



12



an international community

Life on the CTS Campus

A realistic understanding of education recognizes that learning occurs both in and out of the classroom. Continental seeks to graduate people of competence and character who will lead the way in bringing meaningful change in our world. Together with the entire seminary community, the Student Life Office seeks to unite learning and living in all activities. Through the programs and services of the Student Life Office, students are encouraged to grow in independence, in responsibility, in servanthood, and in Christian maturity.

Campus life is an integral part of the seminary experience. Sharing experiences, forming lasting friendships, and living as a member of the seminary community contribute to the process of shaping Christian character.

CTS provides numerous opportunities to participate in co-curricular activities including student ministries, athletics, student missions, music groups, cultural events, student government, and other activities.

Student Life

Student Handbook

The seminary provides each student with a *Student Handbook* that outlines the programs, services, and expectations of the seminary. The seminary desires to promote a community environment where students can live self-regulating and productive lives. Violations of these expectations result in disciplinary procedures that are designed to be redemptive to the individual and provide restitution to the seminary community where appropriate.

Spiritual Development

Daily chapel services at Continental provide an opportunity for students, faculty, and staff to express their faith through corporate worship and praise to God. A vibrant chapel atmosphere promotes spiritual growth and provides an opportunity for individuals to minister to each other. Chapel services include both small groups and all-school community gatherings.

To foster spiritual formation and character, the seminary leadership encourages the personal devotions of each student. Additionally, there is an active Missions Outreach and Student Ministry Program on campus providing expanded opportunities for students to develop and grow spiritually.

Campus Life

Throughout the school year various special events, concerts, banquets, and a variety of student activities provide a rich social environment for students. Being in close proximity to Brussels, the capital of Europe, a variety of off-campus cultural activities are easily accessible.

Residence Life

Continental is a residential seminary because it believes that the residential experience makes a valuable contribution to shaping Christian character. Faculty and staff members realize that the years spent at CTS are a period of significant developmental change for most students. It is in the context of community that the seminary can best fulfill its mission to the “whole person.” Living on campus is an integral part of a student’s educational experience.

The Housing Supervisor coordinates housing for all students. Resident Assistants are student leaders who work closely with the Student Life Director to provide spiritual, emotional, educational, and social programming designed to assist students in their personal growth and development.

A limited number of on-campus apartments are available to married couples enrolled as full-time students.

Student Association Council

The Student Association Council offers students the privilege and responsibility of serving the student body by coordinating activities and representing student needs to the administration and faculty. In the spring of each academic year the student body elects the council.

Student Missions Association

The Student Missions Association consists of a student leadership team and a faculty sponsor. The association seeks to inspire missionary interest among the student body by organizing the annual Missions Convention, collecting missions faith promises, coordinating missions chapels, and summer missions endeavors.

Student Ministry Committee

The Student Ministry Committee consists of a student leadership team and a faculty sponsor. The committee coordinates all aspects of the student ministry program including weekly student ministries, evangelism outreaches, and Student Ministry Week.

Dress and Appearance

Clothing and appearance are expected to be neat, clean, modest, and reflective of seminary and Christian values. Special attention to appearance is required in some settings. Additional information about appearance is available in the *Student Handbook*.

Student Activities

Student activities abound at Continental. Activities include all-school social nights, dorm socials, sporting opportunities, banquets, and various trips to conferences and seminars. It can be difficult to balance academics with extra-curricular involvement, but by carefully identifying priorities, students are able to glean the most from their time spent at Continental.

International Student Body

One of the strengths of the seminary is the annual blending of more than 30 nationalities in the student body. Students are afforded a natural setting in which to gain an appreciation of other cultures and ways of seeing the world.



a reputation for excellence

The Academic Programs at CTS

In all its programs of study, Continental Theological Seminary offers a “core” curriculum that helps the student integrate knowledge, values, and abilities, equipping them to better serve the Church and the world.

Students are expected to take a variety of courses in specified areas of the curriculum. Added to the core curriculum are additional Bible and theology requirements. To complete / complement the academic program, students may choose a number of “free electives” in areas where they have special interest.

Believing that the Christian faith calls us to excellence both intellectually and spiritually, the seminary actively strives to provide the highest quality education available.

The goal of the seminary is to help the student emerge with an even deeper Christian faith and a desire for Christian leadership and service.

Academic Policies

Personal Tutorial Program

Through the Personal Tutorial Program (PTP), each student will be assigned to a tutor (a member of faculty) upon arrival at CTS. Tutors are available to offer advice and to discuss any problems the student might have, be they academic or personal. The PTP is a tool for students to use when monitoring and planning their academic and personal skills development.

Style Manual

A Manual for Writers of Term Papers, Theses, and Dissertations by Kate L. Turabian has been adopted by the faculty as the standard style for all writing assignments at Continental Theological Seminary. During their first semester, students will be introduced to this style and use it throughout their studies at Continental.

Registration

Students are expected to complete registration during the time scheduled for this purpose. However, if they fail to do so and are not granted authorization by the Academic Dean to register during different than the prescribed registration period, they will be charged a late registration fee. (see Other Charges, page 11)

No student will be permitted to enroll or to change enrollment after the specified dates published in the school calendar.

Housekeeping

In addition to the academic workload, it should be taken into account that each student is expected to contribute to the maintenance of the facilities every week. Housekeeping is an essential part of the student's training at CTS. It serves not only to keep the student's costs lower but to develop a servant's heart and skills that will aid in ministry. We expect students to treat their housekeeping responsibilities as they would any of their courses.

Class Absences

The policy on class absences is detailed in the *Course Handbooks*.

Cancellation of Scheduled Courses

Because of extenuating circumstances, a scheduled class may have to be cancelled. In any event, the Academic Dean will decide whether or not the class is to be offered.

Withdrawal from the Seminary

Application for withdrawal from the seminary is made in the Academic Office. No withdrawal from school is official until the withdrawal is signed and cleared by each office indicated on the form. There is a fee for withdrawal (see Other Charges, page 11). Any potential reimbursement of funds is calculated according to the official date of withdrawal indicated on the withdrawal form.

Student Classification

Based on the number of credits earned, the following student classifications have been established.

<u>CREDITS</u>	<u>CLASSIFICATION</u>
00 - 60	First-year Student
61 - 120	Second-year Student
121 - 180	Third-year Student

The following designations are used to classify students:

Full-time	Course load of 36 Credits
Part-time	Course load under 36 Credits
Non-classified	Not enrolled in a program

Auditing

Auditing students are exempt from the requirements for the course and will receive no grade; AU will appear on the transcript. A course taken as an audit may not be changed to a course for credit. Audit fees are published.

Graduation Requirements

The seminary has established the following requirements for graduation:

1. Complete final year at CTS before graduation.
2. Completion of all academic requirements.
3. Good standing student status.
4. Student account must be paid-in-full.
5. Complete application for graduation.
6. Receive approval for graduation.
7. Attend the commencement exercises.

Programs of Study

Bachelor in Bible and Applied Theology

The first cycle of academic studies, leading to the degree of Bachelor in Bible and Applied Theology, provides a solid theological education and prepares students for entering different ministries in the Church. In addition, it equips the students for teaching Christian Religion inside and outside the Church establishment. It also introduces students to personal research in areas in which they are taught through courses, seminars, and assigned theological research papers. A wide range of courses is taught in the major fields of theology: Biblical Exegesis, Systematic Theology, Church History, and Practical Theology. In addition to these core courses, the program provides courses in Biblical Languages and studies in the area of Church Music and Worship.

Bachelor in Bible and Missiological Studies

The Bachelor in Bible and Missiological Studies degree is designed to help the student concentrate his/her studies in the area of Missions as well as obtain adequate and sufficient knowledge in the major fields of Bible and Theology. It also introduces students to personal research in areas in which they are taught through courses, seminars, and assigned theological research papers. This stage also serves as an introduction to later study. Being foundational for missiological studies, a wide range of courses is taught in the major fields of theology: Biblical Exegesis, Systematic Theology, Church History, Practical Theology.

Bachelor of Divinity (BDiv)

The Bachelor of Divinity degree is designed to help the student concentrate his/her studies in the area of Biblical languages as well as obtain adequate and sufficient knowledge in the major fields of Bible and Theology. This first cycle academic program is structured in such a way that the student may gain a meaningful exposure to Biblical Hebrew and Biblical Greek disciplines. The degree provides a solid theological education, which would prepare the students for entering different ministries in the Church, and to teach Christian Religion inside and outside the Church establishment. It will introduce the students to personal research in the areas of instruction through the courses, the seminars and the assigned theological research papers. The range of courses includes the major fields of theology: Biblical Exegesis, Systematic Theology and Church History.

In addition to these programs of study, Continental Theological Seminary also offers fully accredited MTh

Degree Program. You may the Graduate catalog on the website.

MTh in Biblical Studies or Missiological Studies

The second cycle of academic studies, leading to the degree of Master of Theology, offers core courses and seminars through which the student acquires knowledge in the major fields of theology, biblical exposition and missions. The program combines broad theological formation with the skill of conducting theological research in the light of the contemporary religious environment. Students preparing themselves to become Bible teachers, exegetes, writers of theological literature or missionaries are provided with expertise in either Old Testament, New Testament and missions. The biblical and theological research abilities of the student are demonstrated in the writing of a thesis.

Basic Course Structure with Exit Points

The three-year degree course is divided into three sections:

Level One: Certificate,

Level Two: Diploma,

Level Three: Degree.

Students opting to take the first year only [Level One] may be awarded a Certificate in Bible & Applied Theology. Students opting to take two years only [Level Two] may be awarded a Diploma in Bible & Applied Theology. Students completing all three levels will be awarded the Bachelor in Bible and Applied Theology degree. Modules offered in the first year of the course are classed as Level One. Modules offered in the second year are classed as Level Two, but may be classed as Level Three. This is to allow a student who may transfer from another institution directly into year three to elect modules from year two as well as from year three. Modules offered in the third year of the course are classed as Level Three.

With regard to Diploma and Degree courses, students may only progress to the second year after satisfactory completion of the first year. A student will be considered to have satisfactorily completed the first year when he or she has earned 60 credits at Level One. A student will be considered to have satisfactorily completed the Diploma when he or she has earned 60 credits at Level One and 60 credits at Level Two. A student will be considered to have satisfactorily completed the Degree when he or she has earned 60 credits at Level One and 60 credits at Level Two and 60 credits at Level Three.

Bachelor in Bible and Applied Theology

Possible specializations in Christian Education or Music [360 Credits]
(This degree is offered in English or French)

Course Outline

The degree of Bachelor in Bible and Applied Theology provides a solid theological education, which prepares students for entering different ministries in the Church, and to teach Christian Religion inside and outside the Church establishment. It introduces students to personal research in the areas of instruction through the courses, seminars and the assigned theological research papers. The degree also serves as an introduction to later personal study. A wide range of modules is taught in the major fields of theology: Biblical Exegesis, Systematic Theology, Church History and Practical Theology.

Specializations

In addition to core modules the programme is supported with certain modules offering the student the opportunity for specializations in Music. Students are also offered a wide range of electives.

The programs of specialization offered at the seminary are designed to help the student taking a degree in one area (Bible and Theology) to concentrate some of his studies in a second area of interest. A specialization is not comprehensive but is structured so that the student may gain a meaningful exposure to another discipline. After completing such a course, the student should have a grasp of the nature of the discipline and should be adequately equipped to do further work in the area of study.

On the other hand, it is possible for the student to complete the compliment of modules necessary for the degree by taking the core modules and a selection of elective modules, including individual modules from any of the areas of specializations.

Level ONE

SEMESTER ONE

CORE

TH 101 Introduction to Theology (6)
BI 107 Studies in Pentateuch (6)
BI 108 Gospel of John (6)
LA 201 Essentials of New Testament Greek (10)
or
LA 203 Essentials of Biblical Hebrew (10)
ED 102 Study Skills (2)
MU 103 Voice I/Choir

SPECIALIZATION

MUSIC

MU 101 Applied Piano I (4)
MU 105 Instrumental (4)
MU 106 CTS Singers I (4)

SEMESTER TWO

CORE

BI 106 Hermeneutics (6)
HI 101 Pentecostal Foundations (6)
BI 103 Book of Acts (6)

SPECIALIZATION

MUSIC

MU 102 Applied Piano II (4)
MU 104 Voice II (4)

ELECTIVES

BI 101 Old Testament Survey (4)
BI 102 New Testament Survey (4)
BI 104 Life of Christ (4)
BI 110 Studies in Historical Books (4)
CM 101 Homiletics (4)
ED 101 Studies in Philosophy of Religion (4)
LA 202 Intermediate New Testament Greek (10)
LA 204 Intermediate Biblical Hebrew (10)

DEGREE TRACKS

Bachelor's degree in Bible and Applied Theology: The student must select the following core modules: Introduction to Theology (TH 101), Studies in Pentateuch (BI 107), Gospel of John (BI 108), Essentials of New Testament Greek (LA 201) or Essentials of Biblical Hebrew (LA 203), Hermeneutics (BI 106), Pentecostal Foundations (HI 101) and Book of Acts (BI 103). The student must select two other modules of his/her choice from the elective modules offered by the Academic Office with the exception of the music degree students where the music modules for the specialization replace the elective modules.

Level TWO

SEMESTER ONE

CORE

HI 201 Church History I (6)
TH 201 Christology and Soteriology (6)
MU 201 Music and Worship (6)
LA 201 Essentials of New Testament Greek (10)
or
LA 203 Essentials of Hebrew (10)

SPECIALIZATIONS

MUSIC

MU 204 Music Theory I (6)

SEMESTER TWO

CORE

HI 202 Church History II (6)
TH 203 Pneumatology (6)
BI 204 Romans (6)

MUSIC

MU 205 Music Theory II (6)

ELECTIVES

BI 201 Studies in Major Prophets (4)
BI 202 Epistle to the Hebrews (4)
BI 203 Studies in Minor Prophets (4)
LA 203 Intermediate New Testament Greek (10)
LA 204 Intermediate Biblical Hebrew (10)
LA 301 First Epistle of John in Greek (6)
LA 302 Principles of Greek Exegesis (6)
LA 303 Advanced Hebrew I-A (6)
LA 304 Advanced Hebrew I-B (6)
MI 201 Introduction to Missions (4)
MI 203 Cultural Anthropology (4)

DEGREE TRACKS

The student's selection of modules for level two will depend on his/her choice of course:

Bachelor in Bible and Applied Theology:

All the modules in the first two core groups must be included in the student's selection. The remaining modules are to be selected from any of the other groups.

Bachelor in Bible and Applied Theology with Music specialization:

All the modules in the first two core groups must be included in the student's selection. The remaining modules are to be selected as follows: two from the specialization group - Music Theory I (MU 204), Music Theory II (MU 205).

Level THREE

SEMESTER ONE

CORE

BI 301 Corinthians (6)
TH 301 Ecclesiology (6)
RE 301 Dissertation (12)

SPECIALISATIONS

MUSIC

MU 301 Music History & Literature (4)
MU 202 Applied Piano III (4)

ELECTIVES

BI 302 The Book of Revelation (4)
CM 303 Spiritual Leadership Development (4)
LA 301 First Epistle of John in Greek (6)
LA 303 Advanced Hebrew I-A (6)
MI 301 Studies in World Religions (4)
MI 304 Church Growth Strategies (4)

SEMESTER TWO

CORE

ED 303 Christian Ethics (6)
TH 303 Anthropology, Angelology, and Hamartiology (6)
CM 304 Pastoral Theology (6)

SPECIALISATIONS

MUSIC

MU 302 Church Music Administration (4)
MU 203 Applied Piano IV (4)

ELECTIVES

BI 303 Poetic & Wisdom Literature (4)
ED 301 Pastoral Counseling (4)
ED 302 Apologetics (4)
LA 302 Principles of Greek Exegesis (6)
LA 304 Advanced Hebrew I-B (6)
MI 302 Cross Cultural Communication (4)
MI 303 New Religious Movements (4)

DEGREE TRACKS

The student's selection of modules for level three will depend on his/her choice of course:

Bachelor in Bible and Applied Theology:

All the modules in the first two core groups must be included in his/her selection. The remaining modules are to be selected from any of the other groups.

Bachelor in Bible and Applied Theology with Music specialization:

All the modules in the first two core groups must be included in the student's selection. The remaining modules are to be selected as follows: four from the specialization group - Music History & Literature (MU 301), Applied Piano III (MU 202), Church Music Administration (MU 302) and Applied Piano IV (MU 203).

Bachelor in Bible & Missiological Studies

This degree is offered in English

Course Outline

The degree of Bachelor in Bible and Missiological Studies provides a solid theological education, which prepares students for entering different mission ministries in the Church, and to teach Christian Religion inside and outside the Church establishment. It introduces students to personal research in the areas of instruction through the courses, seminars and the assigned theological research papers. The degree also serves as an introduction to later personal study. A wide range of modules is taught in the major fields of theology: Biblical Exegesis, Systematic Theology, Church History and Practical Theology.

Level ONE

SEMESTER ONE

CORE

TH 101 Introduction to Theology (6)
BI 107 Studies in Pentateuch (6)
BI 108 Gospel of John (6)
LA 201 Essentials of New Testament Greek (10)
or
LA 203 Essentials of Biblical Hebrew (10)
ED 102 Study Skills (2)
MU 103 Voice I/Choir

SEMESTER TWO

CORE

BI 106 Hermeneutics (6)
HI 101 Pentecostal Foundations (6)
BI 103 Book of Acts (6)

ELECTIVES

BI 101 Old Testament Survey (4)
BI 102 New Testament Survey (4)
BI 104 Life of Christ (4)
BI 110 Studies in Historical Books (4)
CM 101 Homiletics (4)
ED 101 Studies in Philosophy of Religion (4)
LA 202 Intermediate New Testament Greek (10)
LA 204 Intermediate Biblical Hebrew (10)

DEGREE TRACKS

Bachelor's degree in Bible and Missiological Studies: The student must select the following core modules: Introduction to Theology (TH 101), Studies in Pentateuch (BI 107), Gospel of John (BI 108), Essentials of New Testament Greek (LA 201) or Essentials of Biblical Hebrew (LA 203), Hermeneutics (BI 106), Pentecostal Foundations (HI 101) and Book of Acts (BI 103). The student must select two other modules of his/her choice from the elective modules offered by the Academic Office with the

exception of the music degree students where the music modules for the specialization replace the elective modules.

Level TWO

SEMESTER ONE

CORE

HI 201 Church History I (6)
TH 201 Christology and Soteriology (6)
MU 201 Music and Worship (6)
LA 201 Essentials of New Testament Greek (10)
or
LA 203 Essentials of Hebrew (10)

SEMESTER TWO

CORE

HI 202 Church History II (6)
TH 203 Pneumatology (6)
BI 204 Romans (6)

MISSIONS REQUIRED

MI 201 Introduction to Missions (4)
MI 203 Cultural Anthropology (4)

ELECTIVES

BI 201 Studies in Major Prophets (4)
BI 202 Epistle to the Hebrews (4)
BI 203 Studies in Minor Prophets (4)
LA 203 Intermediate New Testament Greek (10)
LA 204 Intermediate Biblical Hebrew (10)
LA 301 First Epistle of John in Greek (6)
LA 302 Principles of Greek Exegesis (6)
LA 303 Advanced Hebrew I-A (6)
LA 304 Advanced Hebrew I-B (6)

Level THREE

SEMESTER ONE

CORE

BI 301 Corinthians (6)
TH 301 Ecclesiology (6)
RE 301 Dissertation (12)

MISSIONS REQUIRED

MI 301 Studies in World Religions (4)
MI 304 Church Growth Strategies (4)

ELECTIVES

BI 302 The Book of Revelation (4)
CM 303 Spiritual Leadership Development (4)
LA 301 First Epistle of John in Greek (6)
LA 303 Advanced Hebrew I-A (6)

SEMESTER TWO

CORE

ED 303 Christian Ethics (6)
TH 303 Anthropology, Angelology, and Hamartiology (6)
CM 304 Pastoral Theology (6)

MISSIONS REQUIRED

MI 302 Cross Cultural Communication (4)
MI 303 New Religious Movements (4)

ELECTIVES

BI 303 Poetic & Wisdom Literature (4)
ED 301 Pastoral Counseling (4)
ED 302 Apologetics (4)
LA 304 Advanced Hebrew I-B (6)
LA 302 Principles of Greek Exegesis (6)

Bachelor of Divinity (BDiv)

This degree is offered in English.

Course Outline

The Bachelor of Divinity degree is designed to help the student concentrate his/her studies in the area of Biblical languages as well as obtain adequate and sufficient knowledge in the major fields of Bible and Theology. The program is structured in such a way that the student may gain a meaningful exposure to Biblical Hebrew and Biblical Greek disciplines. The degree provides a solid theological education, which would prepare the students for entering different ministries in the Church, and to teach Christian Religion inside and outside the Church establishment. It will introduce the students to personal research in the areas of instruction through the courses, the seminars and the assigned theological research papers. The degree also serves as an introduction to later personal study. The range of courses includes the major fields of theology: Biblical Exegesis, Systematic Theology and Church History.

Level ONE

SEMESTER ONE

CORE

TH 101 Introduction to Theology (6)

BI 108 Gospel of John (6)

BI 107 Studies in Pentateuch (6)

and either

LA 201 Essentials of New Testament Greek (10)

or

LA 203 Essentials of Hebrew (10)

ED 102 Study Skills (2)

MU 103 Voice I/Choir

SEMESTER TWO

CORE

BI 106 Hermeneutics (6)

BI 103 Book of Acts (6)

and either

LA 202 Intermediate New Testament Greek (10)

or

LA 204 Intermediate Biblical Hebrew (10)

ELECTIVES

BI 101 Old Testament Survey (4)

BI 102 New Testament Survey (4)

BI 104 Life of Christ (4)

BI 110 Studies in Historical Books (4)

CM 101 Homiletics (4)

ED 101 Studies in Philosophy of Religion (4)

HI 101 Pentecostal Foundations (6)

Level TWO

SEMESTER ONE

CORE

TH 201 Christology and Soteriology (6)

and either

LA 201 Essentials of New Testament Greek (10)

LA 303 Advanced Hebrew I-A (6)

or

LA 203 Essentials of Hebrew (10)

LA 301 First Epistle of John in Greek (6)

ELECTIVES

HI 201 Church History I (6)

BI 201 Studies in Major Prophets (4)

BI 202 Epistle to the Hebrews (4)

MU 201 Music and Worship (6)

SEMESTER TWO

CORE

HI 202 Church History II (6)

TH 203 Pneumatology (6)

and either

LA 202 Intermediate New Testament Greek (10)

LA 304 Advanced Hebrew I-B (6)

or

LA 204 Intermediate Biblical Hebrew (10)

LA 302 Principles of Greek Exegesis (6)

ELECTIVES

BI 203 Studies in Minor Prophets (4)

BI 204 Romans (6)

CM 201 Introduction to Christian Education (4)

MI 201 Introduction to Missions (4)

MI 203 Cultural Anthropology (4)

Level THREE

SEMESTER ONE

CORE

BI 301 Corinthians (6)

TH 301 Ecclesiology (6)

RE 301 Dissertation (12)

and either

LA 301 First Epistle of John in Greek (6)

or

LA 303 Advanced Hebrew I-A (6)

ELECTIVES

BI 302 The Book of Revelation (4)
CM 304 Pastoral Theology (6)
CM 303 Spiritual Leadership Development (4)
MI 301 Studies in World Religions (4)
MI 304 Church Growth Strategies (4)

SEMESTER TWO

CORE

ED 303 Christian Ethics (6)
TH 303 Anthropology, Angelology, and
Hamartiology (6)
and either
LA 302 Principles of Greek Exegesis (6)
or
LA 304 Advanced Hebrew I-B (6)

ELECTIVES

BI 303 Poetic & Wisdom Literature (4)
ED 301 Pastoral Counseling (4)
ED 302 Apologetics (4)
MI 302 Cross Cultural Communication (4)
MI 303 New Religious Movements (4)

Course Descriptions

Organization of Courses

The course offerings at Continental Theological Seminary are organized as follows:

BI Bible
CM Church Ministries
ED General Education
HI History
LA Languages
MI Missions
MU Music
RE Research
TH Theology

Numbering of Courses

Each course in the curriculum is assigned a course number that has two letters and a three-digit number. The letters designate the academic area (as outlined above), and the numbers distinguish courses offered in that area. A course listed in more than one academic area may be taken for credit in either area. The first digit 0 through 9 normally indicates the year-level or special purpose for which the course is designed.

000 - 099 - Developmental, non-credit, courses that do not fulfill general education requirements
100 - 199 First-year courses
200 - 299 Second-year courses
300 - 399 Third-year courses
500 - 599 Masters level courses
900 - 999 Seminars

Course Cancellations

The seminary reserves the right to cancel any scheduled course for which there is insufficient enrollment or other extenuating circumstances.

BIBLE (BI)

DIVISION OF BIBLE

BI 101 OLD TESTAMENT SURVEY

4 ECTS

An introductory study of the literature of the Old Testament within its historical background, stressing the major features of each book. Special attention is given to the chronology of events, geography, and culture of the Bible lands.

BI 102 NEW TESTAMENT SURVEY

4 ECTS

An introductory study of the literature of the New Testament within its historical background, stressing the major features of each book. Special attention is given to the chronology of events, geography, and culture of the Bible lands.

BI 103 BOOK OF ACTS

6 ECTS

A study of the record regarding the origin and growth of the early Church, as well as its teaching and practice and the nature and development of the Pauline mission. Special emphasis is given to the dynamic role of the Holy Spirit.

BI 104 LIFE OF CHRIST

4 ECTS

A study of the Gospels written by Matthew, Mark, and Luke with an analysis of the style, structure, and subject matter of the respective books. Special emphasis is given to the harmony of the Gospels in their presentation of the person and work of Christ.

BI 106 HERMENEUTICS

6 ECTS

A study of the principles and methods of biblical interpretation. A definition of the task of hermeneutics, a clarification of current issues, and a discussion of the critical assumptions encountered are included.

BI 107 STUDIES IN PENTATEUCH

6 ECTS

A study of Israel's emergence as a people under God's initiative. Various methods of approaching the books of Genesis through Deuteronomy are examined. Diverse theological perspectives are studied in relationship to their historical contexts.

BI 108 GOSPEL OF JOHN

6 ECTS

A study of the fourth Gospel, including a historical overview of its interpretation, a literary presentation of the book, an analysis of its content, an examination of its religious background, the main features of its theology and the data pertinent to its authorship.

BI 110 STUDIES IN HISTORICAL BOOKS

4 ECTS

A study of the background and content of the ten (10) historical books of the Old Testament (Joshua through Esther) presenting a history of Israel from the conquest of Canaan to the close of the Old Testament.

BI 201 STUDIES IN MAJOR PROPHETS

4 ECTS

An examination of the lives, times, and messages of the prophets Isaiah, Jeremiah, and Ezekiel. The application of the message to our contemporary situation and the eschatological emphases are stressed.

BI 202 EPISTLE TO THE HEBREWS

4 ECTS

An intensive and thorough study of the book of Hebrews. Special attention will be given throughout to the person of Christ, His high priesthood, and Old Testament citations and interpretations dealing with these and other subjects.

BI 203 STUDIES IN MINOR PROPHETS

4 ECTS

An examination of the lives, times, and messages of the Minor Prophets Hosea through Malachi. The application of their message and predictive elements are examined.

BI 204 ROMANS

6 ECTS

An analytical and expository study of this companion epistle devoting special attention to the theological themes.

BI 301 CORINTHIANS

6 ECTS

A study and exposition of the background and content of each book. Special consideration is given to the writer's teachings regarding the correction of Corinthian problems, the Church, and the gifts of the Spirit.

BI 302 THE BOOK OF REVELATION

4 ECTS

The role of divine sovereignty in eschatology as presented in the books of Daniel and Revelation is emphasized. Various viewpoints will be presented.

BI 303 POETIC & WISDOM LITERATURE

4 ECTS

A study of the poetic literature of the Old Testament, with attention to the characteristic features and forms of Hebrew poetry and the role of wisdom in Israel. Special emphasis will be given to their practical application to today's life and thought.

CHURCH MINISTRIES (CM)

DIVISION OF CHURCH MINISTRIES

CM 101 HOMILETICS

4 ECTS

An introduction to the art of speech, sermon preparation, and delivery. The student applies the knowledge by classroom practice and sermon evaluation.

CM 201 INTRO. TO CHRISTIAN EDUCATION

4 ECTS

An overview of the function and place of Christian Education in the Church today including biblical, theological, historical, and philosophical foundations.

CM 303 SPIRITUAL LEADERSHIP DEVELOPMENT

4 ECTS

The course examines the biblical approach to leadership and Church practice. It examines biblical models, historical models, and the social and cultural dynamics of spiritual leadership with emphasis on topics such as training of disciples, treatment of subordinates, and dealing with conflict and opposition in the Church.

CM 304 PASTORAL THEOLOGY

6 ECTS

A study of the call, life, and work of the minister. Administrative and spiritual responsibilities, as well as dynamics of leadership, are stressed.

GENERAL EDUCATION (ED)

DIVISION OF EDUCATION

ED 101 STUDIES IN PHILOSOPHY OF RELIGION

4 ECTS

This course is an introductory course that provides an overview of western philosophy from its beginning to present. A major emphasis is upon the use of philosophy as a tool with pastoral, evangelistic, and apologetic applications.

ED 201 STUDIES IN EDUCATIONAL PSYCHOLOGY

4 ECTS

A study of learning processes with practical applications for classroom teaching. Topics include human development, the impact of culture and community on learning, learning theory, motivation, testing, and assessment. This course includes a practicum involving observations and interviews with persons working in an educational setting.

ED 301 PASTORAL COUNSELING

4 ECTS

This course is a study of the biblical foundations, basic principles, and techniques of the Christian counseling process in harmony with biblical truths.

ED 302 APOLOGETICS

4 ECTS

This course deals with the defense of the Christian faith in light of major attacks leveled against it. Current intellectual challenges to Christianity and contemporary apologetic approaches are reviewed.

ED 303 CHRISTIAN ETHICS

6 ECTS

A study of moral reasoning, moral responsibility, and the necessity of a Christian foundation for morality. The emphasis of this class will be to examine biblical ethical foundations for their application to contemporary Christian choices.

HISTORY (HI)

DIVISION OF HISTORY

HI 101 PENTECOSTAL FOUNDATIONS

6 ECTS

A study of the historical and theological roots of the modern global Pentecostal movement. The ongoing development of Pentecostal, charismatic and so-called "third wave" Christianity is explored. The course also examines emerging issues like the word of faith movement, prosperity gospel and various revival movements within the Pentecostal and charismatic church.

HI 201 CHURCH HISTORY I

6 ECTS

A study of the development of Christianity from its inception in the Book of Acts through the sixteenth century Reformation. Topics include the rise of orthodoxy, the many transformations that took place after the conversion of Constantine, the rise of the papacy, the many forms of medieval religious life, and the emergence of new forms of both lay and clerical piety.

HI 202 CHURCH HISTORY II

6 ECTS

A study of the development of Christianity from the Reformation until the present. Topics include the leaders and issues of the Reformation, the Catholic Counter-Reformation, the emergence of the many Protestant traditions, the modern missions movement, and the Church in an increasingly secularized society. The rise, development, and spread of Pentecostalism is an emphasis of this course.
Prerequisite: HI 201

LANGUAGES (LA)

DIVISION OF LANGUAGES

LA 201 ESSENTIALS OF NEW TESTAMENT GREEK

10 ECTS

The study of the essentials of Greek including phonology, morphology, and grammar. The student acquires vocabulary and improves translation skills upon the basis of deeper knowledge.

LA 202 INTERMEDIATE GREEK

10 ECTS

This course is a continuation of Essentials of NT Greek. Students will continue to acquire vocabulary and translate sentences. *Prerequisite:* LA 201

LA 203 ESSENTIALS OF BIBLICAL HEBREW

10 ECTS

An introductory course in the vocabulary, grammar, and syntax of Biblical Hebrew.

LA 204 INTERMEDIATE BIBLICAL HEBREW

10 ECTS

A continuation of Essentials of Biblical Hebrew, wherein the students will study vocabulary, grammar, and syntax. Emphasis is placed on reading comprehension and transla-

tion of selected passages in the Hebrew Bible.

Prerequisite: LA 203

LA 301 FIRST EPISTLE OF JOHN IN GREEK

6 ECTS

A course in translation in the Greek New Testament with emphasis upon building vocabulary, grammar, and syntax. Learning material is illustrated from the corpus of the New Testament literature. The student gains insight for translation and interpretation. *Prerequisite:* LA 202

LA 302 PRINCIPLES OF GREEK EXEGESIS

6 ECTS

A course in advanced grammar, syntax, principles, and practice of Greek exegesis with translation in the New Testament. *Prerequisite:* LA 301

LA 303 ADVANCED HEBREW I-A

6 ECTS

This course is designed to increase reading ability in Hebrew, to enlarge the student's vocabulary, and to deepen his knowledge of Hebrew syntax. The course offers study of selected Old Testament books of various literary genres. *Prerequisite:* LA 204

LA 304 ADVANCED HEBREW I-B

6 ECTS

The course emphasizes reading comprehension, syntax, and exegetical methods and tools. The design of the curriculum focuses upon enabling the student to use the Hebrew Bible with greater facility and to use the available tools to do exegesis as preparation for exposition. *Prerequisite:* LA 303

MISSIONS (MI)

DIVISION OF MISSIONS

MI 201 INTRODUCTION TO MISSIONS

4 ECTS

Acquaints the student with the Bible theology of missions, missionary service, and indigenous principles. The responsibility of the individual Christian and that of the local church is emphasized.

MI 203 CULTURAL ANTHROPOLOGY

4 ECTS

The study of man in his social-cultural environment equipping the Christian worker to better understand culture and man.

MI 301 STUDIES IN WORLD RELIGIONS

4 ECTS

A study of major contemporary religions such as Animism, Hinduism, Buddhism, Islam, Catholicism, and Judaism.

MI 302 CROSS-CULTURAL COMMUNICATION

4 ECTS

A study of communication which enables the student to acquire the necessary skills for communicating the gospel cross-culturally.

MI 303 NEW RELIGIOUS MOVEMENTS

4 ECTS

A survey of modern cults such as Mormonism, Jehovah's Witnesses, Spiritism, and the New Age movement. Evangelism techniques applicable to the cults are examined.

MI 304 CHURCH GROWTH STRATEGIES

4 ECTS

A survey of the principles and procedures of church growth. Attention is given to the causes of church growth, the sociological foundations, and special kinds of church growth.

MUSIC (MU)

DIVISION OF MUSIC

MU 101 APPLIED PIANO I

4 ECTS

Preparatory studies in piano and the development of keyboard skills.

MU 102 APPLIED PIANO II

4 ECTS

This course is a continuation of MU 101.
Prerequisite: MU 101

MU 103 VOICE I/CHOIR

4 ECTS

An introduction to the basic concepts of posture, breath control, principles of diction, and vowel production. Sight reading will be emphasized, as well as singing and vocalization.

MU 104 VOICE II

4 ECTS

This course is a continuation of Voice Class I
Prerequisite: MU 103

MU 105 INSTRUMENTAL

4 ECTS

This course is offered subject to the availability of an instructor and/or arrangement with the Brussels Conservatory of Music.

MU 106 ENSEMBLE

4 ECTS

A vocal and instrumental touring ensemble selected by audition each fall semester which performs regularly on campus and in area churches. A spring concert tour is also held during Student Ministry week each year.

MU 201 MUSIC & WORSHIP

6 ECTS

Survey of the development of Christian worship from its Biblical roots to present day forms. Including basic Theological concepts, cultural developments and practical implications in the modern church setting.

MU 202 APPLIED PIANO III

4 ECTS

This course is a continuation of MU 102.
Prerequisite: MU 102

MU 203 APPLIED PIANO IV

4 ECTS

This course is a continuation of MU 202.
Prerequisite: MU 202

MU 204 MUSIC THEORY I

6 ECTS

A study of elementary harmony and part writing, including diatonic seventh chords. This includes analysis and writing of small compositional forms and a correlated study at the keyboard.

MU 205 MUSIC THEORY II

6 ECTS

This course is a continuation of MU 201, including modulation, secondary dominants, and secondary leading-tone charts. *Prerequisite:* MU 101

MU 301 MUSIC HISTORY AND LITERATURE

4 ECTS

A survey of musical development, including early schools of sacred and secular composition, development of instruments, vocal and instrumental forms, and their influence in the development of church music.

MU 302 CHURCH MUSIC ADMINISTRATION

4 ECTS

A study of contemporary approaches to the planning for and administering of music ministry in the local church. Special attention is given to philosophy of worship, resourcing, and skill development.

RESEARCH (RE)

DIVISION OF RESEARCH

RE 301 DISSERTATION

12 ECTS

The Dissertation is a required research course in the Bachelor's degree program. Students are assigned a faculty member who will give guidance and supervision in a research project. The Bachelor's Degree Program strongly emphasizes research by the students both as a means to experience and prepare for post-graduate studies and to work on the leading edge of a given field of study. The Dissertation is an academic paper describing a development, a survey, or a small practical research project in an area of specialization. Objectives of the course are: (1) applying and integrating the classroom material from courses, (2) introducing professional literature, (3) gaining experience in writing a scholarly document, and (4) enhancing knowledge through the evidence of independent work.

THEOLOGY (TH)

DIVISION OF THEOLOGY

TH 101 INTRODUCTION TO THEOLOGY

6 ECTS

This course is an introduction to Systematic Theology with a general overview of the various theological concepts. The lectures and discussion will provide an overview of the Fundamental Truths seen from various Evangelical viewpoints.

TH 201 CHRISTOLOGY AND SOTERIOLOGY

6 ECTS

The doctrine of Christ (Christology) includes prophecy, Old Testament history, and His incarnation, with emphasis upon His atonement. The doctrine of salvation (Soteriology) includes the nature with emphasis upon the application of salvation in repentance, conversion, regeneration, justification, adoption, and sanctification.

TH 203 PNEUMATOLOGY

6 ECTS

A study of the Holy Spirit as a divine person, and His work with believers and unbelievers. Emphasis is placed upon the baptism in the Holy Spirit and the Spirit-filled life, including the gifts and the fruit of the Holy Spirit.

TH 301 ECCLESIOLOGY

6 ECTS

The study of the Church includes its origin, organization, and ordinances. Emphasis is placed upon the Church's purpose as the body of Christ.

TH 302 ESCHATOLOGY

6 ECTS

The doctrine of the last things includes the Church's rapture, the tribulation period, and Christ's millennial kingdom.

TH 303 ANTHROPOLOGY, ANGELOLOGY, AND HAMARTIOLOGY

6 ECTS

The doctrine of man emphasizes his creation, nature, original state, and fall. Angelology includes the creation, fall and work of angels, whether good or fallen. The doctrine of sin (Hamartiology) emphasizes its origin, nature, biblical terminology, and consequences.

THE ENGLISH LANGUAGE INSTITUTE (EFL)

DIVISION OF ENGLISH

The following courses are offered to students to enable them to meet CTS's English language proficiency requirement. Study points for these courses do not count toward the total required study points for the diploma or degree. Four tuition credits are charged, but no academic study points are given. The student may earn a Certificate of Completion for these non-credit courses.

EFL 013 ENGLISH AS A FOREIGN LANGUAGE I-A

This is an entry-level course in English and assumes little or no knowledge of the English language. It is designed to develop conversational and writing skills, and students should be familiar with verb tenses.

EFL 023 ENGLISH AS A FOREIGN LANGUAGE I-B

This is a continuation of EFL English I-A. A basic knowledge of English is needed. It stresses development of intermediate conversational skills and furthers the student's writing skills. *Prerequisites:* EFL 013

EFL 033 ENGLISH AS A FOREIGN LANGUAGE II-A

This course is designed to complete the student's exposure to all of the basic English skills. Reading, writing, speaking, listening, grammar, vocabulary building, and pronunciation are stressed. *Prerequisites:* EFL 023

EFL 043 ENGLISH AS A FOREIGN LANGUAGE II-B

This is a continuation of Fundamentals of English II-A with an emphasis on enhancing the basic skills already learned in the area of grammar, listening, vocabulary, and writing. *Prerequisites:* EFL 033

EFL 053 ENGLISH AS A FOREIGN LANGUAGE III-A

This is an intermediate course emphasizing reading, listening, pronunciation, grammar, and vocabulary building and preparing the student to enter college-level English composition courses. *Prerequisites:* EFL 043

EFL 063 ENGLISH AS A FOREIGN LANGUAGE III-B

This course is a continuation of the previous course emphasizing reading, listening, pronunciation, grammar, and vocabulary skills. *Prerequisites:* EFL 053



at CTS you will gain
Competence and Character

30

Application

Continental Theological Seminary welcomes your Application for Admission. Your application and each of your supporting credentials will be carefully reviewed. Since each applicant to CTS is evaluated on his or her individual merit, it is extremely important that these materials present a full and accurate record of your academic and personal qualifications.

Questions? If you need assistance in completing this Application for Admission, Please call the Admissions Office at: +32 (02) 334.85.32. If you have questions about finances, please call the Business Office at: +32 (02) 334.85.35.

Admissions Checklist

How To Apply

Items You Must Submit

Application Materials— Before you mail your application materials to the Admissions Office, complete and include the following items:

- Application for Admission
- Photos— two recent head and shoulders photos (passport style)
- Application Fee (non-refundable)— 40.00 EUR
- Personal Statement (TYPED) *see application section IX*
- Personal Autobiography (TYPED) *see application section X*
- English language proficiency verification

English Language Requirement— Applicants applying to study in English programs, and whose first language is not English, must demonstrate English proficiency either by submitting to the Admissions Office a satisfactory score on the TOEFL (Test of English as a Foreign Language), or the MTELP (Michigan Test of English Language Proficiency). Additional TOEFL and MTELP information is included with this application booklet. The TOEFL registration code for Continental Theological Seminary is **0194**. A Data Collection form must also be submitted.

Use this checklist whether you are applying to enter the Bachelor's Degree program, Diploma program, Certificate program, or Transferring from another institution.

Items You Must Ask Others to Submit for You

- Pastoral Reference**— *Pastor or Church Official*

No Reference Forms may be completed by family members.

- Transcripts**— Request your high school and, if applicable, every post-high school institution (university) where you have studied to forward your official transcript of academic records to the Admissions Office. If you have a high school “equivalency” transcript, you may forward it to the Admissions Office. For your convenience, Transcript Request Forms are inserted in the back of this application booklet— *See Application Instructions on the back page of the Application for Admission.*

- Transfer Reference**— If you are transferring from another institution (university), official transcripts of all post-high school / seminary level work must be submitted to the Admissions Office as soon as possible. A transfer reference, to be completed by the Dean from the most recent college / seminary attended, must also be submitted— *See application Instructions on the back page of the Application for Admission.*

Once received, all information and documents become property of the seminary and cannot be returned or forwarded.

Application Deadline Dates

Application forms should be returned to the seminary no later than **15 August** for the Fall Semester, and **1 December** for the Spring Semester. For clarification of academic questions, applicants are invited to call and / or schedule an appointment with the Academic Dean by telephoning the Admissions Office at +(32) 02/334.85.32.

Once you've applied to Continental, what happens next? Turn the page for information about what you can expect.

What Next?

After You Apply

What you can expect from CTS

- Admissions Decision** In most cases, a decision regarding your admission will be made within 2 weeks after CTS has received all application materials. If an interview is required, a CTS representative will contact you by telephone.
- Admissions Waitlist** Students who meet CTS's admissions requirements will be offered immediate admission. Students who do not fully meet admission requirements, however, may be placed on a Waitlist. CTS will notify these students of their Waitlist status and give further instructions.

After You Are Admitted

The Steps to Enroll

- Admissions Letter** Once you have been admitted to CTS, you will receive an acceptance letter. At a later date you will receive academic, housing, registration, the CTS campus, the local community, insurance requirements, financial information, and *Welcome Weekend*.
- New Student Orientation** New students are expected to attend the *Orientalyion Day*, which introduces life at CTS immediately preceding the opening day of fall and spring semester classes.

IV. EDUCATIONAL INFORMATION— *List every high school and every post-high school institution (university) where you completed at least one course.*

SCHOOL	LOCATION	DATE ATTENDED	DEGREE	DATE AWARDED
_____	_____	_____	_____	_____
_____	_____	_____	_____	_____
_____	_____	_____	_____	_____

YOU MUST REQUEST THAT EACH INSTITUTION SEND AN OFFICIAL TRANSCRIPT OF ACADEMIC WORK TO THE ADMISSIONS OFFICE AT CONTINENTAL.

V. CHURCH INFORMATION

Present church you regularly attend

Name of church _____

Specific denominational affiliation of church _____

Name of pastor _____ Are you a member? Yes No

VI. PASTORAL REFERENCE

Please use the Pastoral Reference and Academic Reference Forms provided with this Application for Admission and return the completed forms to Continental Theological Seminary.

1. _____ Address _____
pastor or church official

2. _____ Address _____
professor, professional colleague or friend

VII. PERSONAL STATEMENT— *Please TYPE all responses. Limit your total response to all questions in section IX to two TYPED, single-spaced pages. Send with the application.*

1. Ministry Goal (if applicable).

- a. Indicate the kind of ministry you feel God is calling you to fulfill.
- b. How do you expect your studies at CTS to prepare you for this ministry?

2. Describe your previous ministry experience (if applicable).

3. Comment on any relevant medical or psychological history that may help the seminary accommodate your needs as a student.

4. Please respond to the following questions.

- Have you ever been separated or divorced? Yes No
- Have you ever been convicted of a crime? Yes No
- To the best of your knowledge has your moral behavior ever been called into question? Yes No
- Are you now or have you ever been treated for substance or alcohol abuse / addiction? Yes No
- Do you now or have you ever used tobacco? Yes No

VIII. PERSONAL AUTOBIOGRAPHY— *TYPE a brief autobiography of no more than two pages using single-spacing (double-spacing between paragraphs). Send with the application.*

Include comments on your commitment to Christ, including when and how you became a Christian, when you were baptized in water, if you feel a call of God on your life for ministry, the significant factors which have aided your growth as a Christian, and the important events and people shaping your identity as a person.

IX. FINANCIAL INFORMATION

Please EXPLAIN FULLY your PLAN to finance your education (include as many details as possible). _____

APPLICATION INSTRUCTIONS

(Check only ONE)

REGULAR STUDENT

1. Complete full Application for Admission.
2. Submit a (non-refundable) fee of 40.00 EURO with this application. *See below for Bank Transfer Information.*
3. Send your (Personal Statement IX) and (Autobiography X) with this application.
 - *Ideally, the Seminary must receive the completed application by 1 September prior to the Fall term for which admission is being sought*
 - *Interviews and campus visits may be desired to clarify certain questions. In such cases, an appointment with the Academic Dean may be necessary. If so desired, please call the Admissions Office to arrange details for such an appointment. Familiarity with the catalog is requested before visiting the seminary.*
 - *A decision regarding admission is normally made within two weeks after all application material is received, including receipt of all transcripts and recommendation forms. You will be notified by mail immediately after a decision has been made.*

SPECIAL STUDENT

Special students are NOT enrolled in a degree program but have privileges and responsibilities as degree program students.

1. Complete full Application for Admission.

TRANSFER STUDENT

1. Complete full Application for Admission.
2. Include a statement of explanation and purpose for the proposed transfer.

AGREEMENT

I certify that the information I have provided in my Application for Admission to Continental Theological Seminary is true, complete, and accurate. Further, I am aware of the standards and expectations for student conduct as outlined on page 3 of this catalog. If admitted to Continental, I agree to abide by and support the Community Life Statement.

Signature _____ Date _____

IF YOU HAVE ANY QUESTIONS, PLEASE CALL THE ADMISSIONS OFFICE AT +(32) 02/334.85.55 OR E-MAIL US AT: ADMISSIONS@CTSEM.EDU

INTERNATIONAL PAYMENTS

You may be able to arrange with your bank to pay by bank transfer or bank deposit. Our Bank information is:

KBC: Bank

Koning Albertplein 1
B-1600 Sint-Pieters-Leeuw, Belgium
Account No. 426-8125211-81 (Please include your name)
BIC: KREDBEBB
IBAN: BE36-4268 1252 1181

ALWAYS PAY IN EURO

**PLEASE ENCLOSE YOUR 40 EURO APPLICATION FEE
WITH THIS FORM AND MAIL TO:**

CONTINENTAL THEOLOGICAL SEMINARY
ADMISSIONS OFFICE
KASTEELSTRAAT 48
1600 SINT-PIETERS-LEEUEW
BELGIUM



Continental Theological Seminary

Pastoral Reference
Pastor or Church Official

Date _____
Day Month Year

TO THE APPLICANT:
Complete the information in this box, then give the form to a pastor or church official according to the instructions included in the Application for Admission Form.

Name of applicant _____
Last First Middle Maiden Name

Address _____

I plan to enroll _____ 20 ____
Month

To the Pastor or Church Official: The Admissions Office would appreciate an evaluation from you concerning the person named above. Your honesty will help us make a careful evaluation. Please complete the front and back of this form. For the following section, please check as many choices as you feel pertain to the applicant.

NOTE: *The applicant's file cannot be considered for review until CTS receives this completed form.*

Christian Commitment and Character

- Above reproach
- Undeveloped in certain areas
- Obvious to others
- Questionable
- No basis for judging

Church Involvement

- Serves in leadership
- Attends frequently
- Attends occasionally
- Invests in the life of the church
- No basis for judging

Capacity for Leadership

- Demonstrates leadership abilities
- Lacks leadership ability
- Potential for leadership
- Authoritarian, can be harsh
- Respected leader
- Avoids leadership responsibility
- No basis for judging

Communication Skills

- Articulate, effective communicator
- Difficulty in expressing ideas
- Insecure
- Comprehends well
- Argumentative
- No basis for judging

Reasoning and Decision-Making Ability

- Insightful, well thought-out
- Impetuous, acts without thinking
- Seeks the counsel of others
- Disregards sound advice
- Displays wisdom
- No basis for judging

Motivation and Perseverance

- Highly motivated
- Easily distracted/discouraged
- Demonstrates persistence
- Lacks resolve/determination
- Easily swayed by circumstances
- No basis for judging

Emotional Maturity and Stability

- Accurate self-appraisal
- Insecure, poor self-image
- Prone to anger
- Exercises self-control
- Prone to depression
- Demonstrates emotional stability
- Emotionally unstable
- No basis for judging

Facility in Interpersonal Relationships

- Approachable, sought out by others
- Avoided by others
- Tolerated by others
- Shows initiative, seeks out others
- Withdrawn, avoids others
- Inappropriate in mixed settings
- Difficulty maintaining relationships
- No basis for judging

Sensitivity to Others

- Responsive to the needs of others
- Insensitive to the feelings of others
- Compassionate, caring
- Impatient with others
- Intolerant to opposition
- Encouraging
- No basis for judging

Responsibility

- Dependable
- Irresponsible, careless
- Avoids responsibility
- Completes work in a timely manner
- Difficulty in managing personal finances
- No basis for judging

Cooperation (ability to work with others)

- Works well with others
- Intimidated in group settings
- Shares responsibility
- Dominates in group settings
- Does not work well with different
- Personalities and temperaments
- No basis for judging

How long have you known the applicant? _____ How well? _____
What is the nature of your relationship? Pastor Teacher Friend Mentor
 Colleague Employer Other _____

Please respond to the following questions, which the applicant must also address on the formal application. If you answer "Yes" to any of these questions, please provide additional relevant information on a separate sheet. This information should include whether or not you perceive the issue to be a hindering factor to the applicant's success in seminary studies. Also, please include how the applicant has demonstrated growth in this area.

To the best of your knowledge, has the applicant ever:

been separated or divorced?	<input type="checkbox"/> Yes	<input type="checkbox"/> No	<input type="checkbox"/> Unable to Comment
been convicted of a crime?	<input type="checkbox"/> Yes	<input type="checkbox"/> No	<input type="checkbox"/> Unable to Comment
given reason for his/her moral behavior to be questioned?	<input type="checkbox"/> Yes	<input type="checkbox"/> No	<input type="checkbox"/> Unable to Comment
been treated for substance or alcohol abuse / addiction?	<input type="checkbox"/> Yes	<input type="checkbox"/> No	<input type="checkbox"/> Unable to Comment
used or uses tobacco?	<input type="checkbox"/> Yes	<input type="checkbox"/> No	<input type="checkbox"/> Unable to Comment

Do you have any reservations with regard to the applicant's decision to pursue seminary education at this time in his/her life? Yes No

If "yes," please comment on a separate sheet.

Please comment on your perception of the applicant's strengths and weaknesses, readiness to begin seminary study, and overall potential for Christian ministry.

If there is additional information that you believe will assist us in the evaluation process, please provide such information on a separate sheet. This may also include the names and addresses of additional references who would be willing to comment on the applicant's readiness for seminary training.

In considering the applicant's suitability for seminary study and overall potential for ministry, please check ONE of the following:
 recommended with enthusiasm recommended with confidence recommended with reservation not recommended

Signature _____ Date _____

Name (print or type) _____ Position _____

Address _____ Phone _____

May we contact you, if needed, for further information or clarification? Yes No

Are you an alumna/us of Continental Theological Seminary? Yes No

IF YOU HAVE ANY QUESTIONS, PLEASE CALL THE ADMISSIONS OFFICE AT +(32) 02/334.85.32 OR E-MAIL US AT: ADMISSIONS@CTSEM.EDU

Please return this completed form to: **CONTINENTAL THEOLOGICAL SEMINARY**
ADMISSIONS OFFICE
KASTEELSTRAAT 48
1600 SINT-PIETERS-LEEUV
BELGIUM

Lecturers, Staff & Trustees

President	Prof. Dr. Joseph Dimitrov
Academic Dean	Mr. Ralf Lubs
Dean of Graduate Studies	Dr. David Courey
Administrative Assistant	Mrs. Lorna Verlinden
Assistant to the President	Ms. Carina Dimitrova
Director of Student Life	Mr. Glen Johnsen
Director of Development	(Vacant)
Registrar /BA/Examinations Officer	Ms. Tina Vale
MTh Examinations Officer	Mrs. Dana Johnsen
Campus Pastor	Mr. Tom Benigas
Music Director	Mr. Glen Johnsen
Vice President of Operations	Mr. Sascha Wyrwal
Librarian	Mrs. Naomi Brelo
I. T. Manager	Mrs. Jan Hess
Campus Maintenance Coordinator	Mrs. Eileen Courey
Business Manager for Campus Operations	Mr. John Alderman

Residential Faculty

Mrs. Cynthia Aldrich, Mr. Stephen Aldrich, Dr. Samuel Brelo, Dr. David Courey, Mr. Jacques Dernelle, Prof. Dr. Joseph Dimitrov, Mr. Glen Johnsen, Mr. Ralf Lubs, Ms. Christy McDougall, Dr. Bob Welch Jr., Mrs. Karen Welch, Mr. Darrell Wood, Mrs. Dianne Wood, Mrs. Johanna Wyrwal.

Adjunct Faculty

Dr. Glenn Balfour, Dr. Charles Hadjev, Mr. Daniel Costanza, Mrs. Anne-Catherine Lemestrez-Pardon, Mr. Benoit Lemestrez, Mr. Carmelo Mendola, Dr. Gedeon Monga Ngoy, Dr. Robin Routledge.

Support Staff

Mrs. Naomi Brelo, Mr. Carl Hess, Mrs. Bobbie Voris.

Trustees

Mr. Palma Apiah-Gyan	Germany
Mr. Gerald Branum	USA
Dr. Robert E. Cooley (Emeritus Member)	USA
Mr. Daniel Costanza (Vice President)*	Belgium
Dr. Joseph Dimitrov	Belgium
Mr. Angelo Greco (Secretary-Treasurer)	Italy
Mrs. Hannelore Illgen	Germany
Dr. Kent Mankins	USA
Mr. Craig Mathison	USA
Mr. Mark Merrill	USA
Mr. Gregory Mundis (Emeritus Member)	USA
Mrs. Heini Roysko	Finland
Mr. James Sabella	USA
Mr. Tim Southerland	USA
Mr. Paul Trementozi (Chair)*	USA
Mr. Steve Van Deventer	Netherlands

*Executive Committee



Directions to the Seminary

From Paris via Mons, Belgium

Follow E19 North direction Mons / Brussels to the Brussels Ring (RO). Exit (right) at 16, Anderlecht / St-Pieters-Leeuw. After exiting the ring, turn left at traffic light on Chaussée de Mons / Bergensteenweg. Pass (under the ring) IKEA on the left. At -18 Frozen Food store (on right), you will find 2 simultaneous stop lights. At the second light, turn right onto Brusselbaan. (A Greek restaurant is on the corner). Travel West 3 kilometers on the Brusselbaan to Kasteelstraat. You will come to a blue and yellow CTS sign. Turn right. (If you reach the large water tower on the right, you have gone too far.) Follow Kasteelstraat until you reach the entrance of CTS (on the right).

From Luxembourg via Namur/Charleroi, Belgium

Follow E411 North, direction Namur / Brussels. E42 West, direction Charleroi / Paris. A54 / RO / E19 North direction Brussels. Exit (right) at 16, Anderlecht / St-Pieters-Leeuw. After exiting the ring, turn left at traffic light on Chaussée de Mons / Bergensteenweg. Pass (under the ring) IKEA on the left. At -18 Frozen Food store (on right), you will find 2 simultaneous stop lights. At the second light, turn right onto Brusselbaan. (A Greek restaurant is on the corner). Travel West 3 kilometers on the Brusselbaan to Kasteelstraat. You will come to a blue and yellow CTS sign. Turn right. (If you reach the large water tower on the right, you have gone too far.) Follow Kasteelstraat until you reach the entrance of CTS (on the right).

From Amsterdam via Antwerp, Belgium:

Follow A1 / E19 South direction Breda / Antwerpen. From Antwerpen, to the Brussels Ring RO / E19. Go west on the E19 / RO toward direction Bergen / Charleroi. Exit (right) at 16, Anderlecht / St-Pieters-Leeuw. Turn right on Chaussée de Mons / Bergensteenweg. Pass IKEA on the left. At -18 Frozen Food store (on right), you will find 2 simultaneous stop lights. At the second light, turn right onto Brusselbaan. (A Greek restaurant is on the corner). Travel West 3 kilometers on the Brusselbaan to Kasteelstraat. You will come to a blue and yellow CTS sign. Turn right. (If you reach the large water tower on the right, you have gone too far.) Follow Kasteelstraat until you reach the entrance of CTS (on the right).

From Aachen, Germany via Liege, Belgium

Follow A3 / E40 West direction Liege / Leuven / Brussels to the E19 / Brussels Ring (RO). Follow E19 around the WEST side of Brussels, toward Bergen / Charleroi. Exit (right) at 16, Anderlecht / St-Pieters-Leeuw. Turn right on Chaussée de Mons / Bergensteenweg. Pass IKEA on the left. At -18 Frozen Food store (on right), you will find 2 simultaneous stop lights. At the second light, turn right onto Brusselbaan. (A Greek restaurant is on the corner). Travel West 3 kilometers on the Brusselbaan to Kasteelstraat. You will come to a blue and yellow CTS sign. Turn right. (If you reach the large water tower on the right, you have gone too far.) Follow Kasteelstraat until you reach the entrance of CTS (on the right).

Index

A

About Continental	2
Academics	15
Academic Policies	16
Admissions	5
Admissions Checklist	31
Admissions Deadline Dates	31
Admissions Procedure	6
After you Apply	32
After you are Admitted	32
Annual Review	10
Application	30/33
Auditing	16

B

Basic Course Structure/Exit Points	17
Bachelor in Bible & Applied Theology	18
Bachelor in Bible & Missiological Studies	17/21
Bachelor of Divinity	17/23

C

Campus Life	14
Cancellation of Scheduled Courses	16
Class Absences	16
Community Life Statement	3
Costs and Financial Information	10
Course Outline	18
Course Cancellations	25
Course Descriptions	25
Bible	25
Church Ministries	26
General Education	26
History	27
Languages	27
Missions	28
Music	28
Research	29
Theology	29
English (EFL)	29

D

Degree Tracks	18/19/20
Dress and Appearance	14
Directions to the Seminary	41

E

English Language Institute	27
Expulsion/Suspension	10

F

Finances	9
----------	---

G

Graduation Requirements	16
-------------------------	----

H

Housekeeping	16
Housekeeping Duties	10
How to Apply	31

I

International Endorsements	3
International Payments	11
International Student Body	14

L

Lecturers / Staff / Trustees	39
------------------------------	----

M

MTh Degree	17
------------	----

N

Non-EU Students	6
Numbering of Courses	25

O

Organization of Courses	25
Orientation	7
Other Charges	11
Our History	2
Our Learning Resources	4
The Library	4
Student Computer Lab	4
Our Location	2
Our Traditions	4
Chapel	4
Welcome Weekend	4
Community Concerts	4
Open Doors	4
Student Ministry Week	4
Graduation	4
Summer Missions	4
Missions Convention	4
Spiritual Emphasis	4
Evangelism Weekend	4

P

Payment in Advance	10
Personal Tutorial Program	16
Programs of Study	17

R

Readmission	7
Registration	16
Residence Life	14
Regulations Governing Payments	10
Record of Payment	10

S

Specializations	18
-----------------	----

Spiritual Development	14
Statement of Faith	2
Student Activities	14
Student Association Council	14
Student Classification	16
Student Handbook	14
Student Insurance	10
Student Life	13
Student Ministry Committee	14
Student Missions Association	14
Style Manual	16

T

Transfer of Credit	7
Transfer Students	6

V

Validation and Accreditation of Degree Programs	3
Visa Information	6
Visit the Campus	7

W

What Next	32
Withdrawal from the Seminary	16